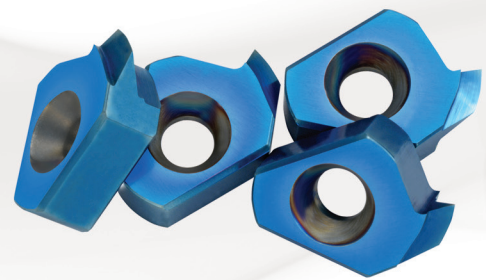




Carmex
Precision Tools Ltd.

New Products

Mini Tools



Tiny Tools



Swiss Line



Metric 2016 - 17

CONTENTS:

Page:

Tiny Tools

MTR, MPR, MIR, MWR, MGR

1-5



Tiny Toolholders

5



CBR

6



Tiny Toolholders for swiss machines

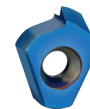
7



Mini Tools

Inserts

8-9



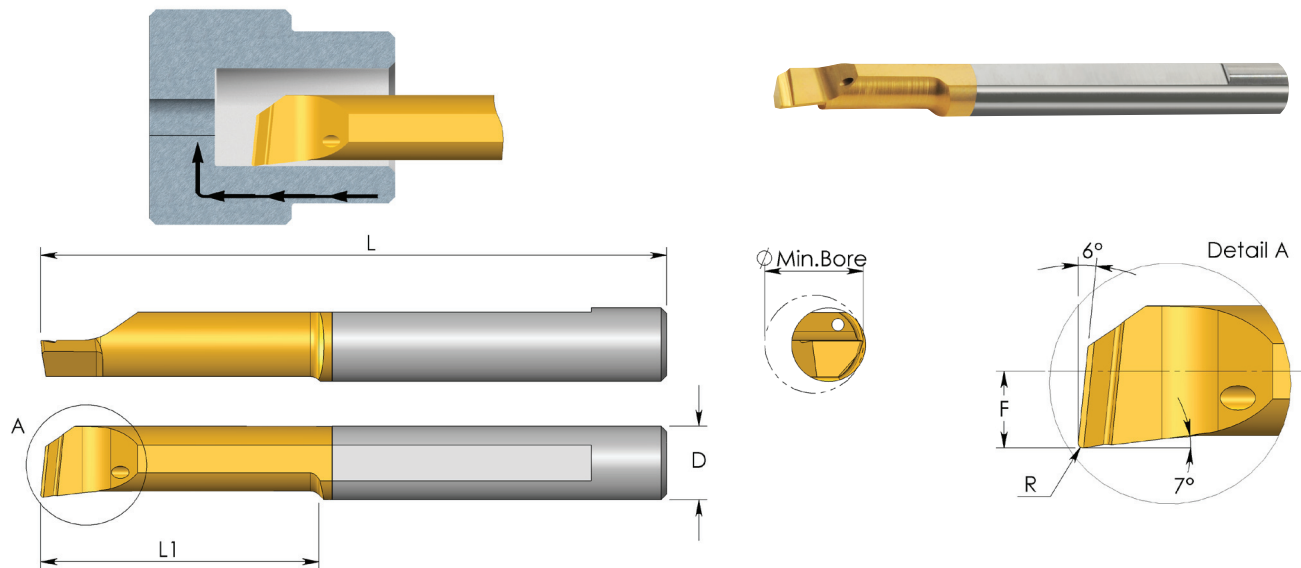
Swiss Line

Slim Holders

10

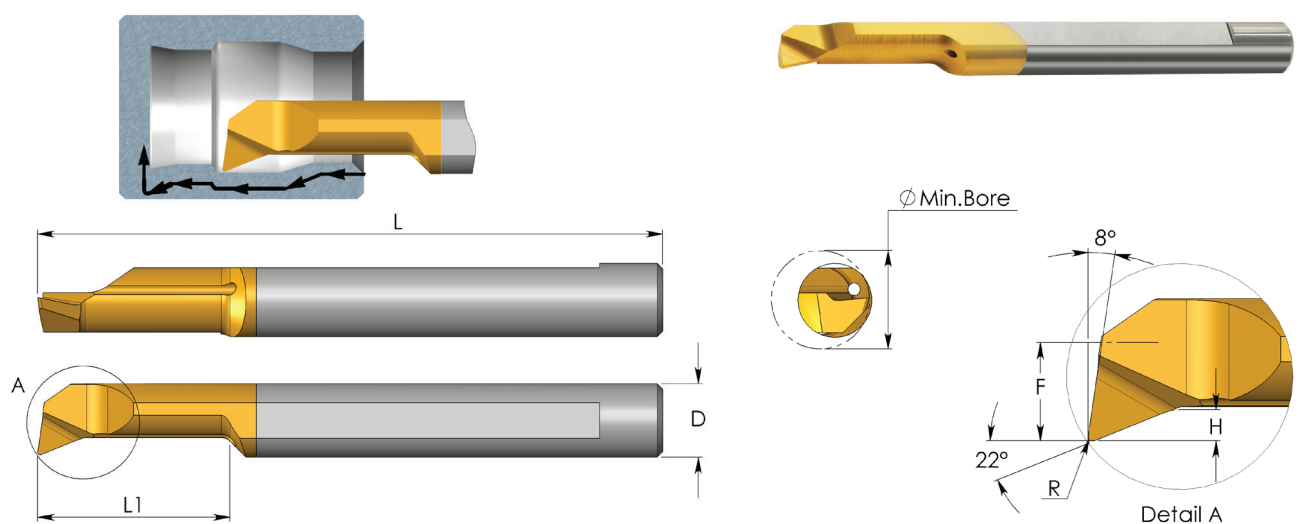


MTR Bars Boring



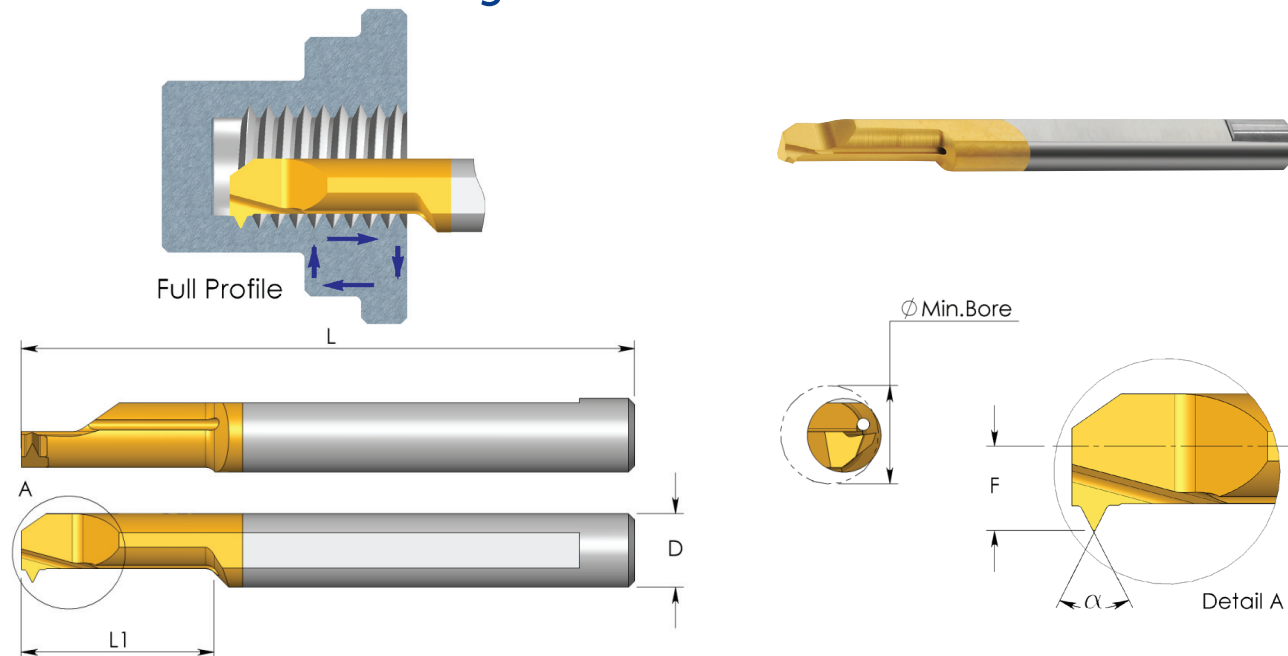
D	Ordering Code	L	L1	R	F	Min. Bore Dia.	Holder
6.0	MTR 6 R0.05 L22	51	22	0.05	2.8	6.1	SIM ... H6
	MTR 6 R0.1 L22	51	22	0.10	2.8	6.1	

MPR Bars Profiling and Boring



D	Ordering Code	L	L1	R	H	F	Min. Bore Dia.	Holder
3.0	MPR 1.5 R0.05 L10	39	10	0.05	0.3	0.7	1.5	SIM ... H3

MIR Bars Threading



Full Profile - ISO 60°

D	Ordering Code	Thread	L	L1	F	Min. Bore Dia.	Holder
3.0	MIR 3 L10 0.5 ISO	M3x0.5	39	10	1.0	2.4	SIM ... H3

Full Profile - UN 60°

D	Ordering Code	Thread	L	L1	F	Min. Bore Dia.	Holder
3.0	MIR 3 L10 32 UN	6-32 UNC	39	10	1.0	2.7	SIM ... H3

Full Profile - MJ 60°

D	Ordering Code	Thread	L	L1	F	Min. Bore Dia.	Holder
3.0	MIR 3 L15 0.7 MJ	MJ4 x 0.7	39	15	1.4	3.2	SIM ... H3
4.0	MIR 4 L15 0.8 MJ	MJ5 x 0.8	51	15	1.8	4.1	SIM ... H4
5.0	MIR 5 L15 1.0 MJ	MJ6 x 1.0	51	15	2.2	4.9	SIM ... H5

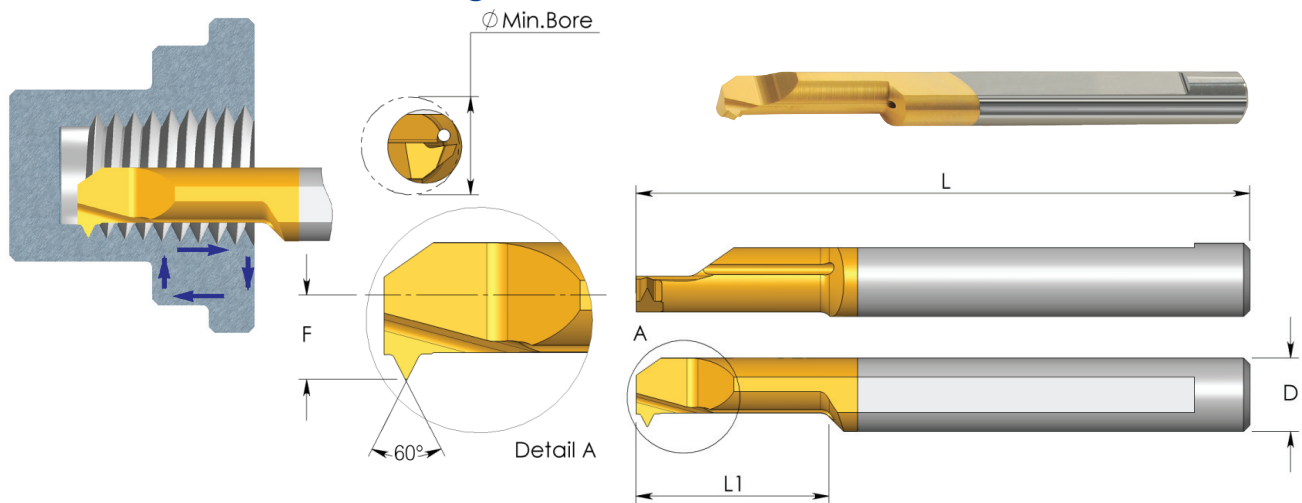
Full Profile - UNJ 60°

D	Ordering Code	Thread	L	L1	F	Min. Bore Dia.	Holder
3.0	MIR 3 L15 32 UNJ	8 - 32 UNJC	39	15	1.4	3.2	SIM ... H3
5.0	MIR 5 L15 28 UNJ	1/4 - 28 UNJF	51	15	2.2	4.9	SIM ... H5

Full Profile - G 55° BSP

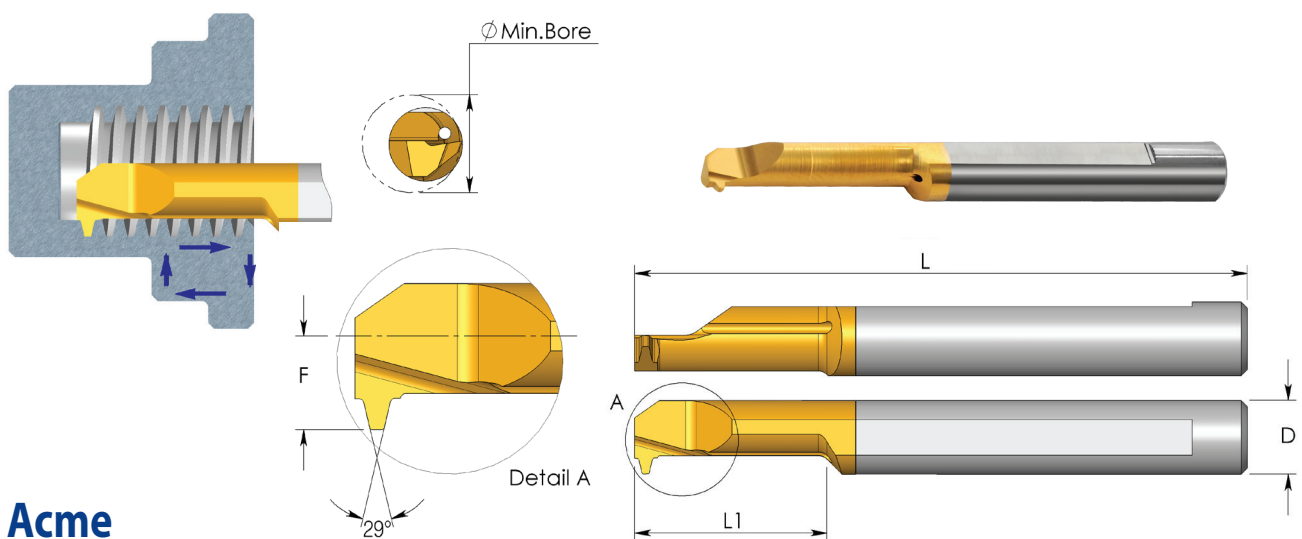
D	Ordering Code	Thread	L	L1	F	Min. Bore Dia.	Holder
6.0	MIR 6 L17 28 W	1/16- 28 BSP	51	17	2.8	6.5	SIM ... H6
	MIR 6 L17 19 W	1/4 - 19 BSP	51	17	2.8	7.0	

MIR Bars Threading



Full Profile - Whitworth 55° BSW

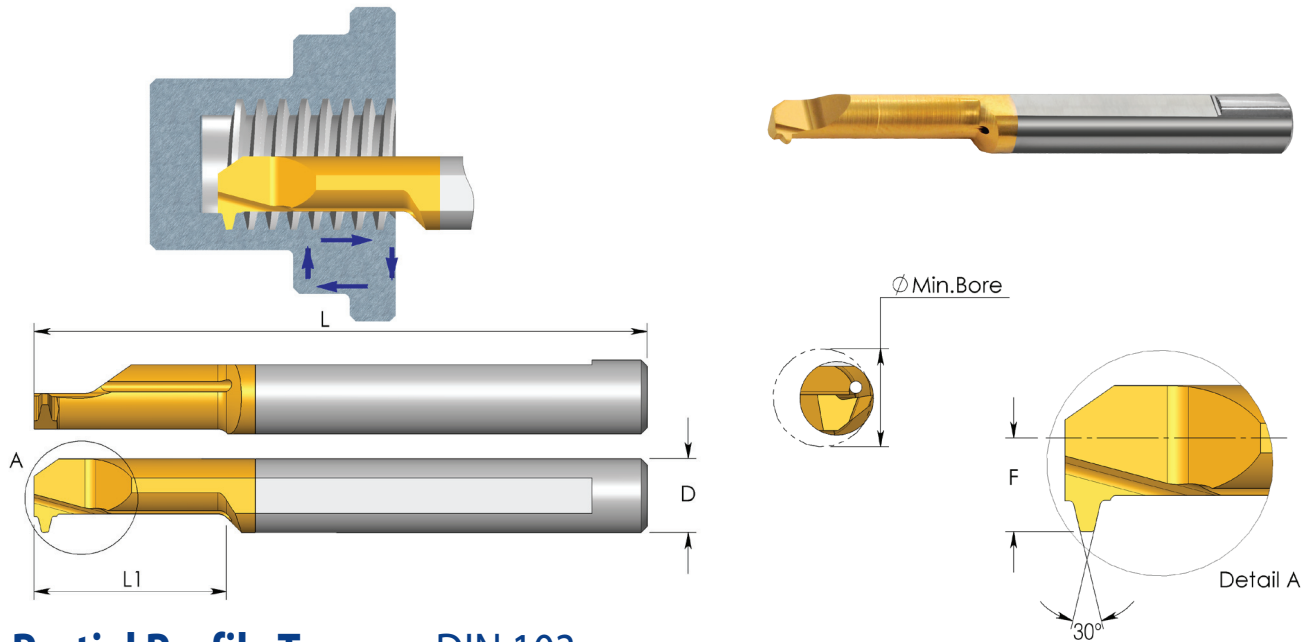
D	Ordering Code	Thread	L	L1	F	Min. Bore Dia.	Holder
5.0	MIR 5 L17 20 W	1/4 - 20 BSW	51	17	2.0	4.7	SIM ... H5



Acme

D	Ordering Code	Pitch TPI	Thread Size	L	L1	F	α	Min. Bore Dia.	Holder
10.0	MIR 10 L52 5 ACME	5	1x5	105	52	4.8	29	20.0	SIM ... H10

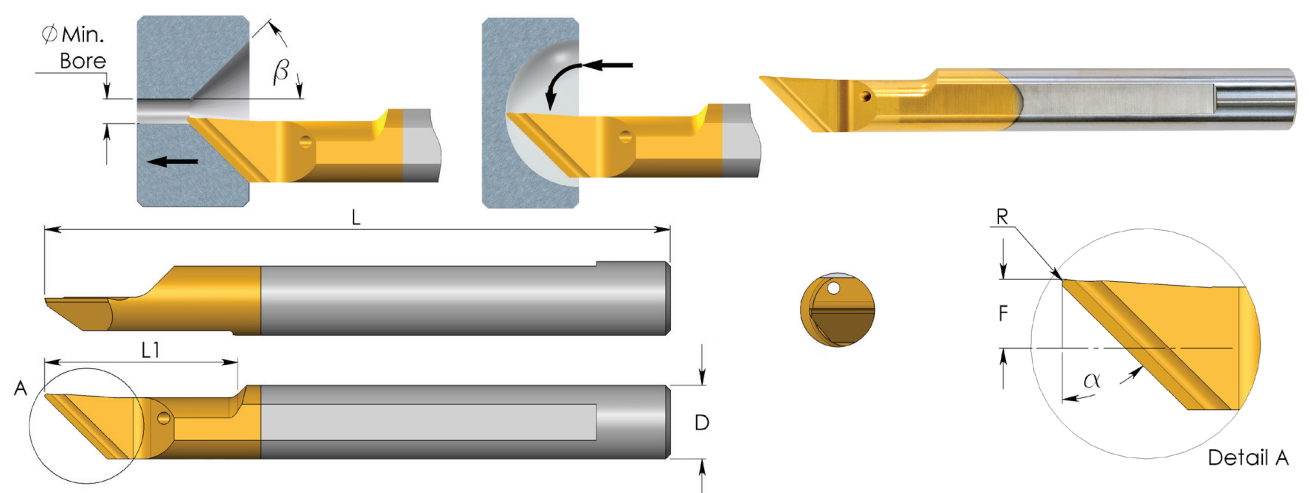
MIR Bars Threading



Partial Profile Trapez - DIN 103

D	Ordering Code	Pitch mm	Thread Size	L	L1	F	α	Min. Bore Dia.	Holder
6.0	MIR 6 L22 1.5 TR	1.5	Tr8x1.5 Tr9x1.5 Tr10x1.5	51	22	2.8	30	6.4	SIM ... H6

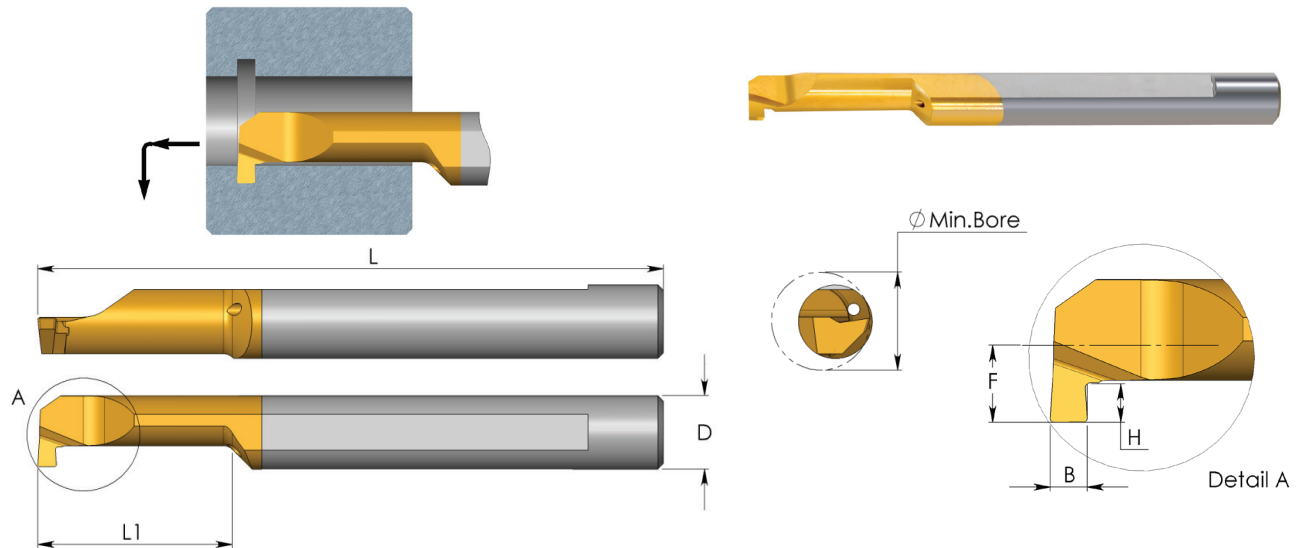
MWR Bars Chamfering and Profiling



D	Ordering Code	L	L1	R	α	β	F	Min. Bore Dia.	Holder
6.0	* MWR 6 R0.4 A90	51	22.0	0.4	45°	45°	2.3	6.0	SIM...H6
	* MWR 6 R0.4 A60	51	22.0	0.4	60°	30°	2.3	6.0	

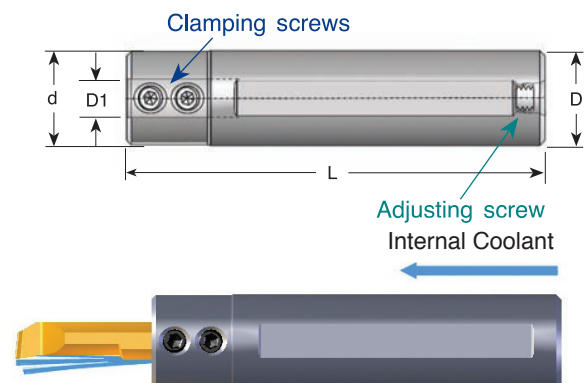
* Can be used also for boring

MGR Bars Grooving



D	Ordering Code	L	L1	B	H	F	Min. Bore Dia.	Holder
4.0	MGR 4 B0.5 L10	51	10	0.5	0.5	1.7	4.1	SIM ... H4
	MGR 4 B0.7 L10	51	10	0.7	0.6	1.7	4.1	

Tiny Tools Bar Holders



D1	Ordering Code	L	D	d	Key	Clamping Screw	Adjusting Screw
3.0	SIM 0022 H3K	120	22	22	K25	S25	S35E
	SIM 0025 H3M	150	25	25	K25	S25	-
4.0	SIM 0022 H4K	120	22	22	K25	S25	S35E
	SIM 0025 H4M	150	25	25	K25	S25	-
5.0	SIM 0022 H5K	120	22	22	K25	S25	S35E
	SIM 0025 H5M	150	25	25	K25	S25	-
6.0	SIM 0022 H6K	120	22	22	K25	S25	S35E
	SIM 0025 H6M	150	25	25	K25	S25	-
7.0	SIM 0025 H7	62	25	10.8	K25	S25	S35M

CBR Bars Profiling and Boring

With advanced Chip Breaker

Chip evacuation is obtained thanks to advanced **Chip Breaker** and the internal coolant through the tool, pushing the chips out of the hole.

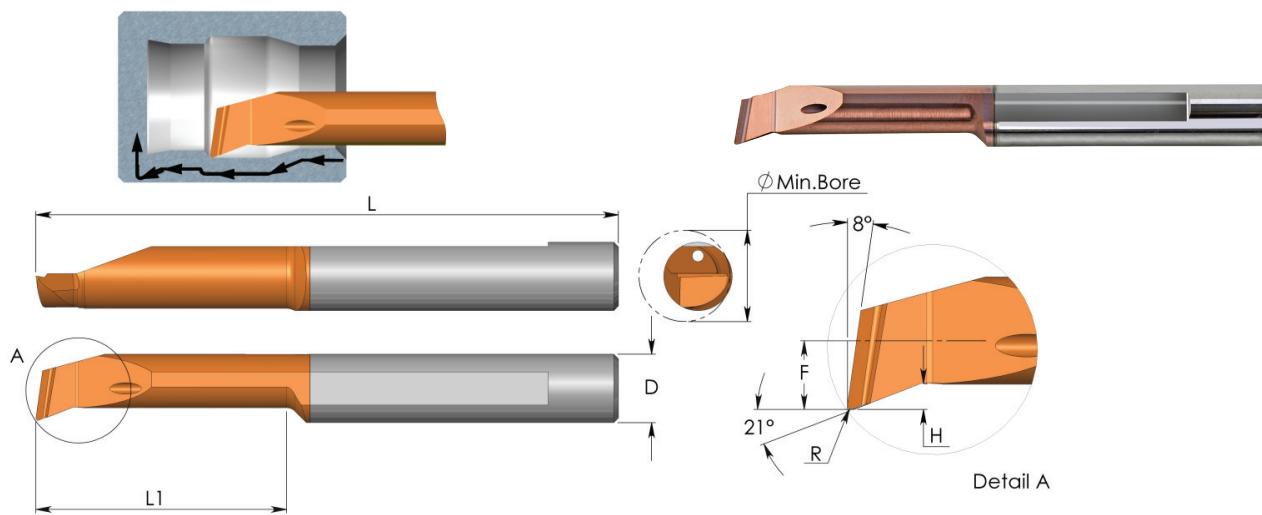
Excellent Solution for machining stainless steels, super alloys and other "difficult" materials that creates curly chips around the tool and the application.

Can be used also as general purpose for a wide range of materials.



Carbide grade:

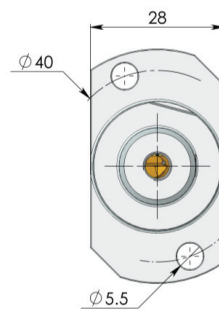
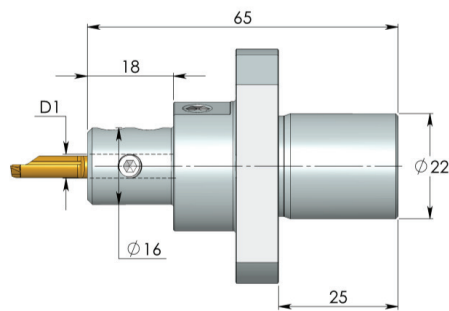
New advanced carbide grade **TNX** for higher feeds and high performance, at medium to high cutting speed. Extra fine grain size with high hardness and toughness combined with triple layer reddish coating, provides high edge stability and better chip flow.



D	Ordering Code	L	L1	R	H	F	Min. Bore Dia.	Holder
4.0	CBR 4 R0.2 L10	51	10	0.2	0.4	1.8	4.1	SIM ... H4
	CBR 4 R0.2 L15	51	15	0.2	0.4	1.8	4.1	
5.0	CBR 5 R0.2 L15	51	15	0.2	0.8	2.3	5.1	SIM ... H5
	CBR 5 R0.2 L22	51	22	0.2	0.8	2.3	5.1	
6.0	CBR 6 R0.2 L15	51	15	0.2	1.0	2.8	6.1	SIM ... H6
	CBR 6 R0.2 L22	51	22	0.2	1.0	2.8	6.1	

Tiny Toolholder for Swiss machines

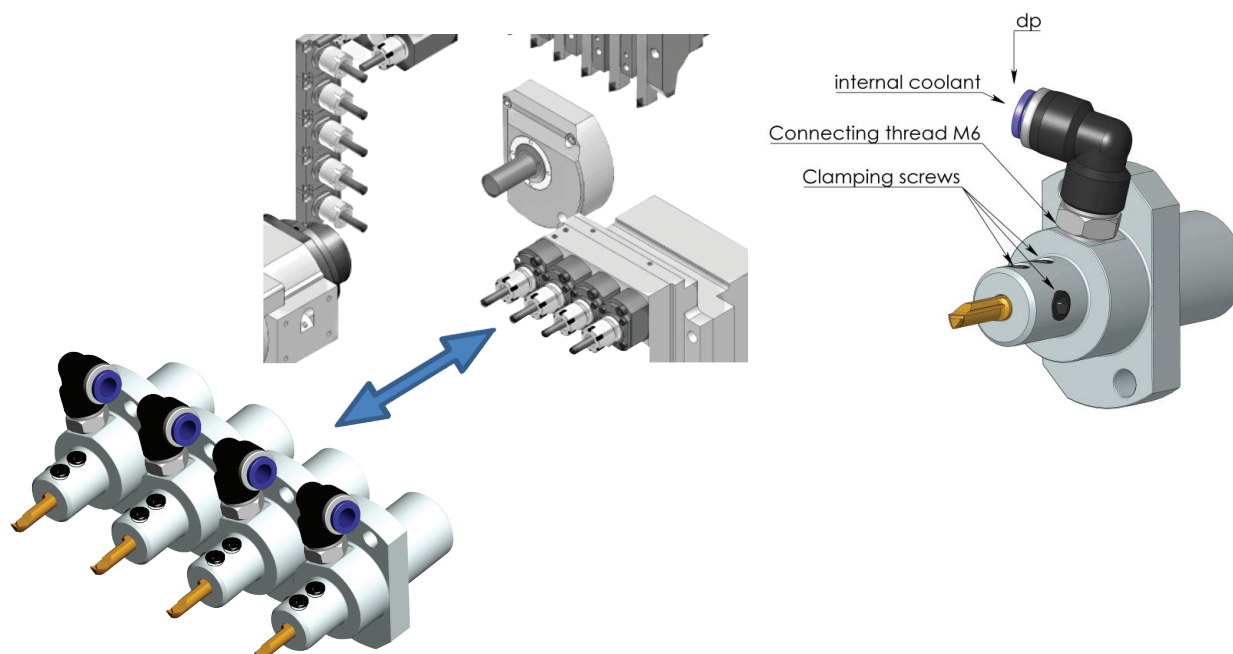
Carmex has developed a unique external turning holder for back operation on a CNC Swiss type machines sliding head.



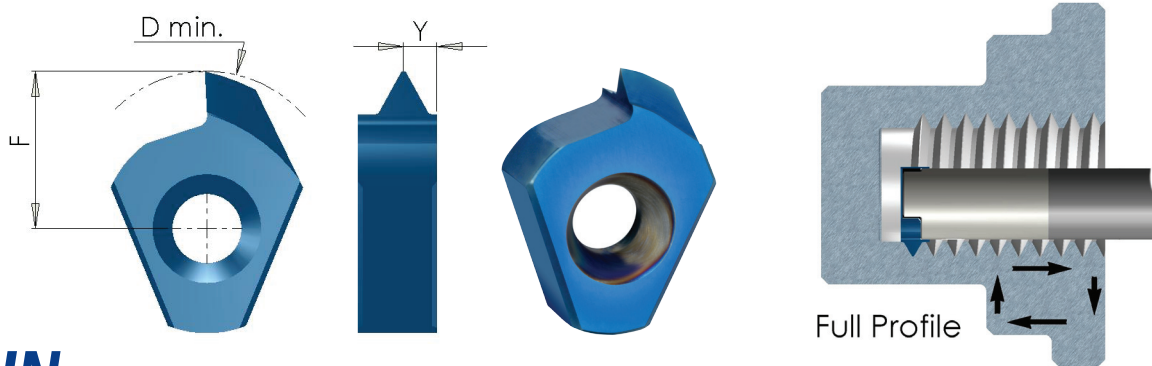
Tiny Toolholder

D1	Ordering Code	dp	Key	Clamping Screw
3.0	SIM 22S H3	4 / 6	K16	S24P
4.0	SIM 22S H4	4 / 6	K16	S24P
5.0	SIM 22S H5	4 / 6	K16	S24M
6.0	SIM 22S H6	4 / 6	K16	S24M

To use on Star machines



Full Profile

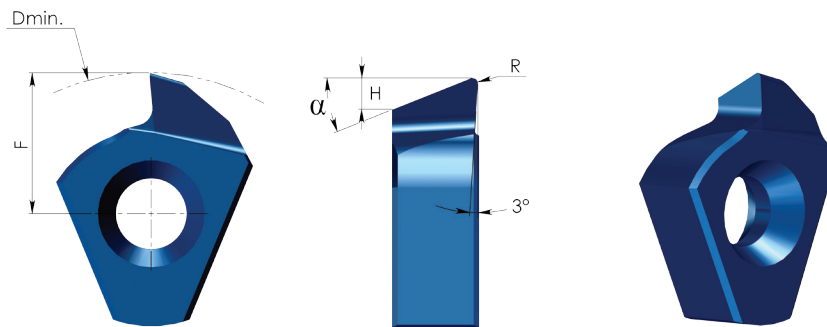


UN

Inserts for internal thread

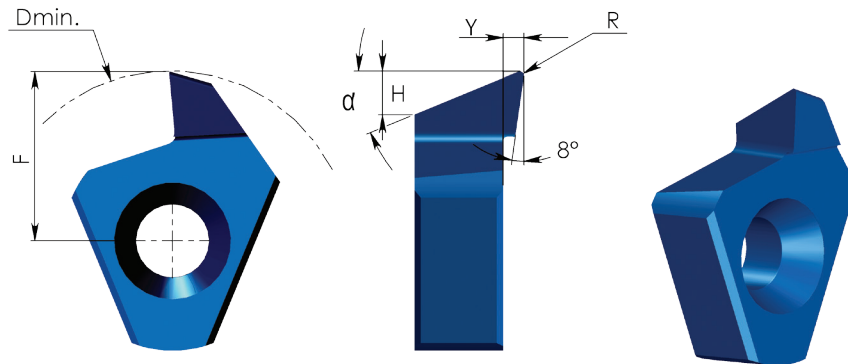
Insert Type	Ordering Code	Pitch TPI	UNC	D min	F	Y
T8	T8 I 13UN	13	1/2	8.8	4.5	1.3
T10	T10 I 10UN	10	3/4	12.6	7.4	1.5

Boring and Profiling



Insert Type	Ordering Code	α	R	H	D min	F
T8	T8 PR R01 A22	22°	0.1	1.0	9.2	5.0
	T8 PR R02 A22	22°	0.2	1.0	9.2	5.0
	T8 QR R01 A47	47°	0.1	1.9	9.2	5.0
	T8 QR R02 A47	47°	0.2	1.9	9.2	5.0

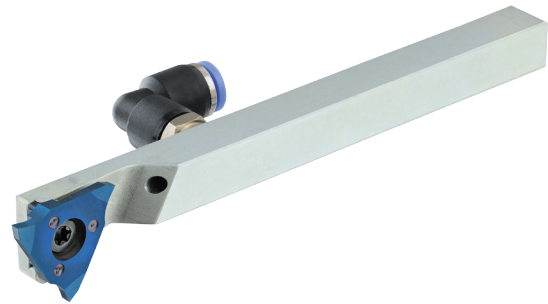
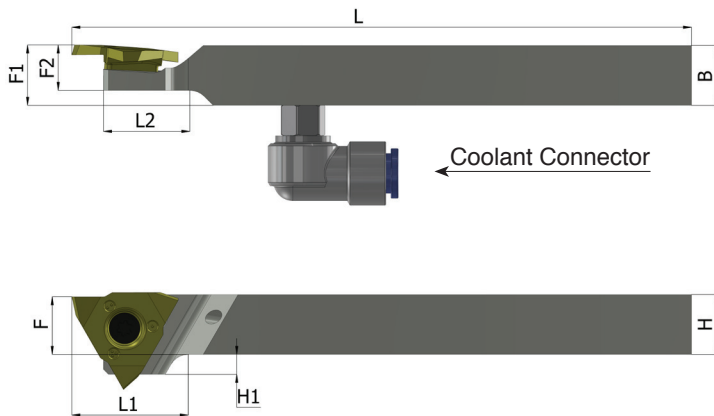
Boring, Profiling and Facing



Insert Type	Ordering Code	α	β	R	H	Y	D _{min}	F
T10	T10 PR R01 A22	22°	8°	0.1	1.9	0.9	12.9	7.7
	T10 PR R02 A22	22°	8°	0.2	1.9	0.9	12.9	7.7
	T10 QR R01 A47	47°	3°	0.1	2.6	0.4	12.9	7.7
	T10 QR R02 A47	47°	3°	0.2	2.6	0.4	12.9	7.7

Swiss Line Slim Holders

For cut-off when using sub-spindle



Right hand

Ordering Code	B=H	L1	L2	L	F	F1	F2	H1	Insert Screw	Torx Key	*Coolant connector
GERS 1010 K	10	17	11	125	10	10	10.0	6	S21S	K21	Ø4 / Ø6
GERS 1212 K	12	17	11	125	12	12	9.5	4	S21S	K21	Ø4 / Ø6
GERS 1616 K	16	-	11	125	16	16	9.5	0	S21S	K21	Ø4 / Ø6
GERS 2020 K	20	-	11	125	20	20	9.5	0	S21S	K21	Ø4 / Ø6

* Diameter of coolant pipe



1st Hacharoshet St., Maalot Industrial Zone
2101302, ISRAEL
Tel: (972) 4-9077400, Fax: (972) 4-9077440.
E-mail: info@carmex.com
Website: www.carmex.com
Postal address: P.O. Box 404, Maalot 2101302, ISRAEL.